



IP20 IP65 IP68 C E

LED TAPE

A wide selection of commercial, high brightness LED tape with excellent light uniformity and optimum colour binning and consistency, designed to provide continuous lines of illumination.

Available with a wide choice of non-dimmable and dimmable drivers and architectural aluminium extrusion to prolong the life of any LED strip.

LED TAPE

FEATURES & BENEFITS

- > High output LED tape with an excellent light uniformity
- > IP20 / IP65 (nano coated) / IP68 (silicone tube) options
- > Average rated LED life: >50,000hrs - maintenance free
- > Optimum colour consistency - 3 step MacAdam

PERFORMANCE

Light source	LED / RGBW
Lumens/Metre	710 - 2920lm (Constant Current) 490 - 2015lm (Constant Voltage)
Colour temperature	2700K / 3000K / 4000K
CRI	>90
Beam angle	120°
LED per metre	120 / 240 (White) 60 / 96 / 120 (RGB & RGBW)
Tape width	8mm
Cut points	Every 50mm (White) Every 100mm (RGB & RGBW)
Termination	15cm 2 core cable
Maximum Bend Radius	30mm
Maximum Run Length	7 metres
Driver	Constant current - Standard /DALI / 1-10V /Triac Constant voltage - Standard / Triac

MATERIALS

LED connectors	Gold alloy
----------------	------------

OPTIONS

- > 5mm Ultra slim LED tape
- > 6W / 12W / 24W single colour 24V LED tape - red / blue / green / yellow / amber / orange / pink / purple / aqua - 120 LED p/m and 240 LED p/m
- > CRI >80 / CRI >95
- > 2200K / 6000K
- > Constant voltage side emitting LED tape
- > Digital addressable RGB colour changing LED tape
- > Constant voltage "S-type" bendable LED tape
- > Custom length LED tape can be supplied with cable to suit project requirements



120 LED per metre tape



240 LED per metre tape



60 LED per metre, RGBW tape

CONSTANT CURRENT TAPE

CONSTANT CURRENT LED TAPE, CRI >90

POWER	COLOUR TEMP	LUMENS	LED P/M	IP20	IP65	IP68
6W	2700K	710lm	120	19906000	19907800	19909600
6W	3000K	720lm	120	19906100	19907900	19909700
6W	4000K	735lm	120	19906200	19908000	19909800
12W	2700K	1420lm	120	19906300	19908100	19909900
12W	3000K	1435lm	120	19906400	19908200	19910000
12W	4000K	1465lm	120	19906500	19908300	19910100
24W	2700K	2845lm	120	19906600	19908400	19910200
24W	3000K	2865lm	120	19906700	19908500	19910300
24W	4000K	2920lm	120	19906800	19908600	19910400
6W	2700K	710lm	240	19906900	19908700	19910500
6W	3000K	720lm	240	19907000	19908800	19910600
6W	4000K	735lm	240	19907100	19908900	19910700
12W	2700K	1420lm	240	19907200	19909000	19910800
12W	3000K	1435lm	240	19907300	19909100	19910900
12W	4000K	1465lm	240	19907400	19909200	19911000
24W	2700K	2845lm	240	19907500	19909300	19911100
24W	3000K	2865lm	240	19907600	19909400	19911200
24W	4000K	2920lm	240	19907700	19909500	19911300

CONSTANT CURRENT RGB & RGBW LED TAPE, CRI>90

POWER	COLOUR TEMP	LED P/M	IP20	IP65
14.4W	RGB	60	19919500	19919700
19.2W	RGBW (2700K)	60	19919600	19919800
19.2W	RGBW (3000K)	60	19919900	19920100
19.2W	RGBW (4000K)	60	19920000	19920200

Please order drivers separately. Driver options for constant current tape include standard, DALI, 1-10V and Triac dimming.

CONSTANT VOLTAGE TAPE

CONSTANT VOLTAGE LED TAPE, CRI>90

POWER	COLOUR TEMP	LUMENS	LED P/M	IP20	IP65	IP68
6W	2700K	490lm	120	19911400	19913200	19915000
6W	3000K	495lm	120	19911500	19913300	19915100
6W	4000K	505lm	120	19911600	19913400	19915200
12W	2700K	980lm	120	19911700	19913500	19915300
12W	3000K	990lm	120	19911800	19913600	19915400
12W	4000K	1010lm	120	19911900	19913700	19915500
24W	2700K	1960lm	120	19912000	19913800	19915600
24W	3000K	1975lm	120	19912100	19913900	19915700
24W	4000K	2015lm	120	19912200	19914000	19915800
6W	2700K	490lm	240	19912300	19914100	19915900
6W	3000K	495lm	240	19912400	19914200	19916000
6W	4000K	505lm	240	19912500	19914300	19916100
12W	2700K	980lm	240	19912600	19914400	19916200
12W	3000K	990lm	240	19912700	19914500	19916300
12W	4000K	1010lm	240	19912800	19914600	19916400
24W	2700K	1960lm	240	19912900	19914700	19916500
24W	3000K	1975lm	240	19913000	19914800	19916600
24W	4000K	2015lm	240	19913100	19914900	19916700

CONSTANT VOLTAGE RGB & RGBW LED TAPE, CRI>90

POWER	COLOUR TEMP	LUMENS	LED P/M	IP20	IP65	IP68
14.4W	RGB	-	60	19916800	19917700	19918600
28W	RGB	-	120	19916900	19917800	19918700
19.2W	RGBW (2700K)	490lm	60	19917000	19917900	19918800
19.2W	RGBW (3000K)	495lm	60	19917100	19918000	19918900
19.2W	RGBW (4000K)	505lm	60	19917200	19918100	19919000
30.7W	RGBW (2700K)	785lm	96	19917300	19918200	19919100
30.7W	RGBW (3000K)	790lm	96	19917400	19918300	19919200
30.7W	RGBW (4000K)	810lm	96	19917500	19918400	19919300
19.2W	RGBW (2700K-6000K) Tuneable	-	60	19917600	19918500	19919400

Please order drivers separately. Driver options for constant voltage tape include standard and Triac dimming only.

LED DRIVERS

DRIVERS

POWER	OUTPUT VOLTAGE	MAX CURRENT	IP RATING	TYPE	DRIVER
12W	24V DC	0.5A	IP20	STANDARD	90119900
15W	24V DC	0.625A	IP20	STANDARD	90119901
24W	24V DC	0.625A	IP20	STANDARD	90119902
36W	24V DC	1.5A	IP20	STANDARD	90119903
40W	24V DC	1.66A	IP20	STANDARD	90119904
60W	24V DC	2.5A	IP20	STANDARD	90119905
75W	24V DC	3.1A	IP20	STANDARD	90119906
96W	24V DC	4A	IP20	STANDARD	90119938
40W	24V DC	1.66A	IP67	STANDARD	90119907
60W	24V DC	2.5A	IP67	STANDARD	90119908
100W	24V DC	4.16A	IP67	STANDARD	90119909
150W	24V DC	6.25A	IP67	STANDARD	90119910
200W	24V DC	10.4A	IP67	STANDARD	90119911
300W	24V DC	12.5A	IP67	STANDARD	90119912
30W	24V DC	1.25A	IP67	TRIAC	90119913
60W	24V DC	2.5A	IP67	TRIAC	90119914
100W	24V DC	4.16A	IP67	TRIAC	90119915
150W	24V DC	6.25A	IP67	TRIAC	90119916
200W	24V DC	10.4A	IP67	TRIAC	90119917
300W	24V DC	12.5A	IP67	TRIAC	90119918
60W	24V DC	2.5A	IP67	1-10V	90119919
100W	24V DC	4.16A	IP67	1-10V	90119920
150W	24V DC	6.25A	IP67	1-10V	90119921
200W	24V DC	10.4A	IP67	1-10V	90119922
300W	24V DC	12.5A	IP67	1-10V	90119923
30W	24V DC	1.25A	IP20	DALI	90119931
60W	24V DC	2.5A	IP20	DALI	90119932
100W	24V DC	4.2A	IP20	DALI	90119933
150W	24V DC	6.25A	IP20	DALI	90119934
200W	24V DC	10.4A	IP20	DALI	90119935
240W	24V DC	10A	IP20	DALI	90119936
300W	24V DC	12.5A	IP20	DALI	90119937
30W	24V DC	1.25A	IP67	DALI	90119930
60W	24V DC	2.5A	IP67	DALI	90119924
100W	24V DC	4.16A	IP67	DALI	90119925
150W	24V DC	6.25A	IP67	DALI	90119926
200W	24V DC	10.4A	IP67	DALI	90119927
240W	24V DC	10A	IP67	DALI	90119928
300W	24V DC	12.5A	IP67	DALI	90119929

CONSTANT CURRENT LED TAPE - STANDARD / DALI / 1-10V / TRIAC DRIVERS

CONSTANT VOLTAGE LED TAPE - STANDARD / TRIAC DRIVERS

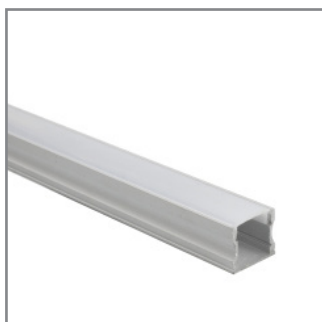
LED TAPE PROFILES

SURFACE MOUNTED PROFILES



SURFACE PROFILE
19800100

W:17mm x H:9mm
Max PCB width: 12mm
Accessories: 4 clips, 2 caps



SURFACE PROFILE
19800200

W:17mm x H:15mm
Max PCB width: 12mm
Accessories: 4 clips, 2 caps



SURFACE PROFILE
19800300

W:19mm x H:20mm
Max PCB width: 17mm
Accessories: 1 rail, 2 caps



ANGLED PROFILE
19800400

W:18 x H:18mm
Max PCB width: 12mm
Accessories: 4 clips, 2 caps

RECESSED MOUNTED PROFILES



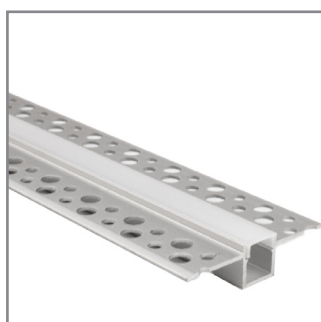
RECESSED PROFILE
19800500

W:17mm x H:9mm flanged
Max PCB width: 12mm
Accessories: 4 clips, 2 caps



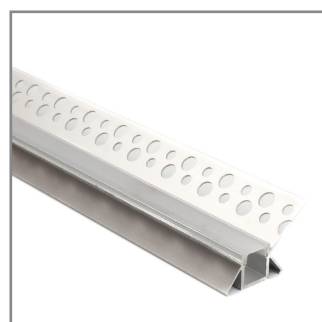
RECESSED PROFILE
19800600

W:17mm x H:15mm flanged
Max PCB width: 12mm
Accessories: 4 clips, 2 caps



TRIMLESS PROFILE
19800700

W:52mm x H:14mm trimless
plaster flat profile with 2 caps
Max PCB width: 8mm



TRIMLESS PROFILE
19800800

W:46mm x H:23mm trimless
plaster angled profile, 2 caps
Max PCB width:9mm

OTHER PROFILES



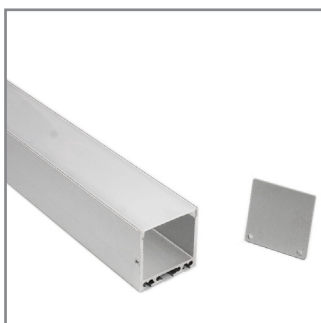
BENDABLE PROFILE
19800900

W:18mm x H:6mm surface
Max PCB width: 15mm
Accessories: 4 clips, 2 caps



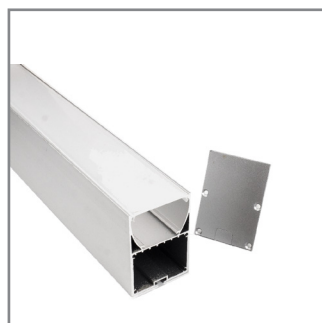
IN-GROUND PROFILE
19801000

W:19mm x H:8mm
Max PCB width: 10mm
Accessories: 2 caps



LINEAR PROFILE
19801100

W:35mm x H:35mm
Max PCB width: 20mm
Accessories: 2 wires, 2 caps



LINEAR PROFILE
19801200

W:50mm x H:70mm
Max PCB width: 44mm
Accessories: 2 wires, 2 caps